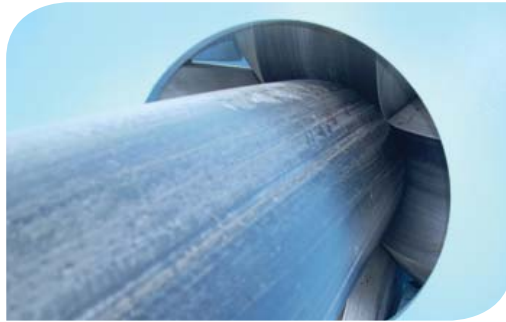


Global Pipeline Protection[®]

Insituform Technologies, Inc. Wastewater | Water | Energy & Mining



Insituform[®]
Global Pipeline Protection[®]



Insituform protects pipes, inside and out.

When some people hear the name *Insituform*, they think of the company that invented cured-in-place pipe (CIPP) and the trenchless sewer rehabilitation industry back in 1971.

And they are right. But today the Insituform family of companies means much more. Together, we stand for quality and reliability in the wastewater, water, energy and mining industries. As we move beyond our traditional role as a product manufacturer and installer, our companies also represent innovation and leadership. We have the capability to be full-fledged project managers — responsible for the construction, replacement, protection and rehabilitation of pipelines worldwide.

At Insituform, we know pipes and how to make them last longer — much longer. Every day, we apply that knowledge to protect the environment and protect our customers' resources.



We are a premier provider.

Pipelines rarely make headlines.

That is, unless they experience a problem. Depending on what flows through them, defective pipes can threaten human health and the environment. They can contribute to sewer overflows in our waterways, stop the flow of clean drinking water to our homes and halt the pipeline transportation of our natural resources. Deteriorated pipelines can disrupt business and economic activity, costing untold dollars and raising regulatory red flags.



Insituform is in the business of keeping pipelines out of the news. We provide long-term, sustainable solutions that protect pipes — inside and out — before, during and after their installation.

Our core business is the Insituform® cured-in-place pipe process — commonly known as CIPP — which we have used to reconstruct more than 19,000 miles of underground pipelines throughout the world, with little to no disruption.

But that is just the tip of the iceberg. Today we provide a complementary array of market-leading products and services for wastewater, water, energy, mining and industrial pipelines.

We are experts in corrosion control and cathodic protection. We provide pipe fabrication, coating and logistical support for offshore oil and gas pipeline installations. We have the proven ability to manage large-scale pipeline projects.

With operations across North America, South America, Europe, the Middle East and throughout the Asia-Pacific Rim, our global reach and depth of our experience proves we are a premier provider for pipeline rehabilitation and protection throughout the world.



We are accountable.

Insituform controls every step in the pipe protection and rehabilitation chain.

Some companies engineer and manufacture pipe lining or coating solutions. Others market and install them. Still others manage the construction process or provide ongoing inspection, monitoring and maintenance services. Insituform has the capability to do all these things — and more.

We take complete responsibility for our solutions — from product development and manufacturing to project engineering and final installation.

Better solutions — Our staff includes some of our industry's top research scientists, engineers and installation professionals, each focused on providing our customers with expert advice and the best solution for their needs. Our in-house team of professionals can design solutions to meet unique project requirements.

Higher quality products — We manufacture our own CIPP tube and other products using proprietary technology and ISO-certified manufacturing processes. Our control over raw materials and centralized manufacturing locations help ensure both our product quality and its affordability.

Greater reliability — From our research and development center to your installation site, our systems are designed to reduce process variation and eliminate defects for consistent high performance from our products and services.

Peace of mind — Each solution and each project is managed with quality and safety in mind. We are the only CIPP manufacturer to obtain OSHA's VPP (Voluntary Protection Programs) Star status. We complete every installation using our own safety-certified crews and follow documented work practices in accordance with the company's ISO certified quality program.

We can be your single point of contact at every step.

We are Insituform.

The Insituform Family of Companies

	Key Products & Services / Markets Served		
	Wastewater	Water	Energy & Mining
 <p>Insituform Global Pipeline Protection</p> <p>Rehabilitation solutions for wastewater and drinking water pipelines</p> <p>www.insituform.com</p>	<ul style="list-style-type: none"> - Insituform® CIPP - iPlus® Composite - iPlus Infusion® - InsituMain® CIPP - iPlus® Glass 	<ul style="list-style-type: none"> - InsituMain® CIPP - InsituGuard® - ITAP® Robotic Service Reinstatement 	
 <p>BAYOU An Insituform® Company</p> <p>Project management, logistics support and prefabrication of onshore and offshore pipelines, including coating, lining and insulation</p> <p>www.bayoucompanies.com</p>		<ul style="list-style-type: none"> - Fusion bond epoxy coatings - Thermal insulations - Concrete weight coatings - Fabrication - Barge, rail and truck loading/unloading capabilities 	
 <p>corrpro An Insituform® Company</p> <p>Cathodic protection systems, corrosion solutions and engineering services for pipelines, storage tanks and other structures</p> <p>www.corrpro.com</p>	<ul style="list-style-type: none"> - Cathodic protection systems and accessories - Corrosion control services - Pipeline condition assessment - Pipeline inspection, monitoring and maintenance - Pipeline integrity management 	<ul style="list-style-type: none"> - Cathodic protection systems and accessories - Corrosion control services - Pipeline condition assessment - Pipeline inspection, monitoring and maintenance - Pipeline integrity management 	<ul style="list-style-type: none"> - Cathodic protection systems and accessories - Corrosion control services - Pipeline direct assessment - Pipeline inspection, monitoring and maintenance - Pipeline integrity management
 <p>united United Pipeline Systems</p> <p>High-density polyethylene lining solutions for the rehabilitation and protection of pipelines used to transport corrosive or abrasive materials</p> <p>www.unitedpipeline.com</p>	<ul style="list-style-type: none"> - Tite Liner® - Safetyliner® 	<ul style="list-style-type: none"> - Tite Liner® - Safetyliner® 	<ul style="list-style-type: none"> - Tite Liner® - Safetyliner®

We are global.

Insituform protects the world's pipelines.

We are expanding our presence to protect wastewater, water, energy and mining pipelines around the world. Wherever there are pipelines, you will find the Insituform family of companies. With operations across the United States, Canada, South America, Europe, Australia, the Middle East and Asia-Pacific, we continue to penetrate geographic markets where demand for our services is strong.



We are global.

Insituform protects the world's pipelines.

INSITUFORM

Corporate Headquarters

United States

Missouri – St. Louis

Ph: 636.530.8000

Area Headquarters

Insituform Asia-Pacific

Singapore

Ph: 65.6542.0771

Insituform Europe

France – Saint Germain-en-Laye

Ph: 33.1.39.04.14.20

Operations

United States

Arizona – Tempe

Ph: 480.446.0620

Arkansas – Little Rock (Conway)

Ph: 501.269.1535

California – Los Angeles (Fullerton)

Ph: 714.278.1900

California – Sacramento

Ph: 916.706.2209

Colorado – Denver (Littleton)

Ph: 303.791.7199

Florida – Jacksonville

Ph: 904.262-5802

Florida – Lake Buena Vista

Ph: 407.938.0131

Florida – Miami

Ph: 305.685.7898

Florida – Tampa

Ph: 813.627.0007

Georgia – Atlanta (Mableton)

Ph: 678.298.2714

Hawaii – Honolulu (Kapolei)

Ph: 808.682.4750

Illinois – Chicago (Lemont)

Ph: 630.257.2209

Louisiana – Hammond

Ph: 985.345.4474

Maryland – Baltimore

Ph: 410.762.5860

Massachusetts – Boston (Charlton)

Ph: 508.248.1700

Michigan – Detroit (Howell)

Ph: 517.546.4107

Minnesota – Minneapolis (White Bear Lake)

Ph: 651.762.1238

Missouri – Kansas City (Belton)

Ph: 816.318.8477

Nevada – Las Vegas

Ph: 702.364.2206

North Carolina – Charlotte (Monroe)

Ph: 704.296.5110

Ohio – Cincinnati

Ph: 513.772.0580

Oregon – Salem (Brooks)

Ph: 503.304.3514

Tennessee – Nashville (LaVergne)

Ph: 615.742.9778

Texas – Austin (Buda)

Ph: 512.295.8887

Texas – Fort Worth

Ph: 817.516.0441

Texas – Houston

Ph: 713.641.5111

Virginia – Richmond

Ph: 804.447.2086

International

Australia – Sydney (St. Marys)

Ph: 61.2.9421.4300

Belgium – Opglabbeek

Ph: 32.89.61.26.37

Canada – Edmonton

Ph: 780.413.0200

Canada – Hamilton

Ph: 905.561.1778

Canada – Montréal

Ph: 514.739.9999

France – Tremuson

Ph: 33.2.96.94.88.42

India – Delhi

Ph: 9111.2854.1080

Netherlands – Zoetermeer

Ph: 31.79.363.6000

Poland – Kraków

Ph: 48.12.622.7380

Spain – Madrid

Ph: 34.91.895.50.40

Switzerland – Zurich (Waldkirch)

Ph: 41.71.430.00.33

United Kingdom – Wellingborough

Ph: 44.1933.678266

Manufacturing Facilities

United States

Mississippi – Memphis (Batesville)

Ph: 662.563.8922

International

United Kingdom – Wellingborough

Ph: 44.1933.678266

Wet Out Facilities

United States

Alabama – Birmingham (Bessemer)

Ph: 205.425.2272

Florida – Ocala

Ph: 352.680.0853

Hawaii – Honolulu (Kapolei)

Ph: 808.682.4750

Indiana – Indianapolis

Ph: 317.489.3863

Pennsylvania – Scranton (Olyphant)

Ph: 570.383.3052

Texas – Fort Worth (McGregor)

Ph: 254.840.2699

Utah – Cedar City

Ph: 435.867.3831

International

Australia – Sydney (St. Marys)

Ph: 61.2.9421.4300

Canada – Edmonton

Ph: 780.413.0200

Hong Kong

Ph: 852.2659.0156

India – New Delhi

Ph: 9111.2854.1080

Joint Ventures

International

Czechoslovakia – Liberec

Ph: 420.485.161.951

Germany – Berlin/Brandenburg

Ph: 49.3328.3982.10

Germany – Cologne/Bonn

Ph: 49.2241.9476.0

Germany – Hamburg

Ph: 49.40.736053.0

Germany – Ilmenau

Ph: 49.36205.93213

Germany – Münster

Ph: 49.2597.98404

Germany – Röthenbach,

Ph: 49.911.95773.0

Hungary – Siófok

Ph: 36.84.550066

Slovakia – Hlohovec

Ph: 42.133.736.9111

Licensees

International

Croatia – Rijeka

Ph: 385.0.51.336.0093

Denmark – Copenhagen (Glostrup)

Ph: 43 96 15 66

Japan – Tokyo

Ph: 81.3.3275.8404

New Zealand – Auckland

Ph: 64.9.636.9200

Norway – Rade

Ph: 47.692.81005

South Korea – Seoul

Ph: 82.2.403.0786

Venezuela – Caracas (Charallave)

Ph: 58.39.982196

BAYOU

Headquarters

United States

Louisiana – New Iberia

Ph: 337.369.3761

Operations

United States

California – Los Angeles (Bakersfield)

Ph: 661.327.4554

Louisiana – Baton Rouge

Ph: 800.249.3018

Louisiana – New Iberia (Custom Coating)

337.364.5741

Louisiana – New Iberia (Port of Iberia)

337.369.3761

Texas – Houston (Conroe)

Ph: 976.539.3294

Joint Ventures

International

Canada – Edmonton (Camrose)

Ph: 780.672.2345

Singapore

Ph: 337.369.3761

Sales

United States

Texas – Houston

Ph: 281.591.1614

International

Canada – Calgary

Ph: 780.672.2345

France – Cassel

Ph: 33.0.6846.45068

CORRPRO

Headquarters

United States

Texas – Houston

Ph: 800.443.3516

Area Headquarters

Corrpro Canada

Canada – Edmonton

Ph: 780.447.4565

Corrpro NDT

Canada – Edmonton

Ph: 780.490.5155

Corrpro Europe

United Kingdom – Stockton-on-Tees

Ph: 44.1642.614.106

Operations

United States

Arizona – Phoenix (Glendale)

Ph: 602.269.7641

California – Los Angeles (Santa Fe Springs)

Ph: 562.944.1636

California – Oakland (San Leandro)

Ph: 510.614.8800

California – San Diego

Ph: 858.824.1992

Georgia – Atlanta (Conyers)

Ph: 770.761.5400

Illinois – Chicago (Streamwood)

Ph: 630.483.2500

Kansas – Hugoton

Ph: 620.544.4411

Louisiana – Lafayette

Ph: 337.233.1711

Louisiana – New Orleans (Harvey)

Ph: 504.366.0475

Massachusetts – Boston (Weymouth)

Ph: 781.812.2689

New Jersey – Ocean City

Ph: 609.399.2417

New Mexico – Farmington

Ph: 505.325.1946

New York – Bronx

Ph: 718.742.7447

North Carolina – Charlotte

Ph: 704.525.6540

Ohio – Medina

Ph: 330.723.5082

Oklahoma – Tulsa (Sand Springs)

Ph: 918.245.8855

Pennsylvania – West Chester

Ph: 610.344.7002

Texas – Dallas

Ph: 903.399.9120

Texas – Houston

Ph: 713.460.6000

Utah – Salt Lake City

Ph: 801.294.5882

Washington – Seattle

Ph: 425.251.8411

International

Canada – Calgary

Ph: 403.235.6400

Canada – Estevan

Ph: 306.634.5629

Canada – Fort St. John

Ph: 250.787.9100

Canada – Grande Prairie

Ph: 780.513.4108

Canada – Lloydminster

Ph: 780.875.8225

Canada – Montreal

Ph: 514.636.0085

Canada – Regina

Ph: 306.757.3335

Canada – Toronto (Mississauga)

Ph: 905.677.2700

Portugal – Almada

Ph: 351.212.599.664

Manufacturing

United States

Oklahoma – Tulsa (Sand Springs)

Ph: 918.245.8791

Sales

International

United Kingdom – Durley

Ph: 44.1489.861.980

UNITED PIPELINE SYSTEMS



Ultimately, our solutions allow us to protect the environment and increase the life expectancy of the world's underground infrastructure.

Wastewater

We are a foremost expert in trenchless sewer rehabilitation.

In the United States, as many as 3.5 million people get sick from sewer overflows each year,* partly because the sewers in many communities are much older than the roads, bridges, schools and other infrastructure that have been constructed above them. The older they get, the greater the chance of deterioration, leaks and collapse.

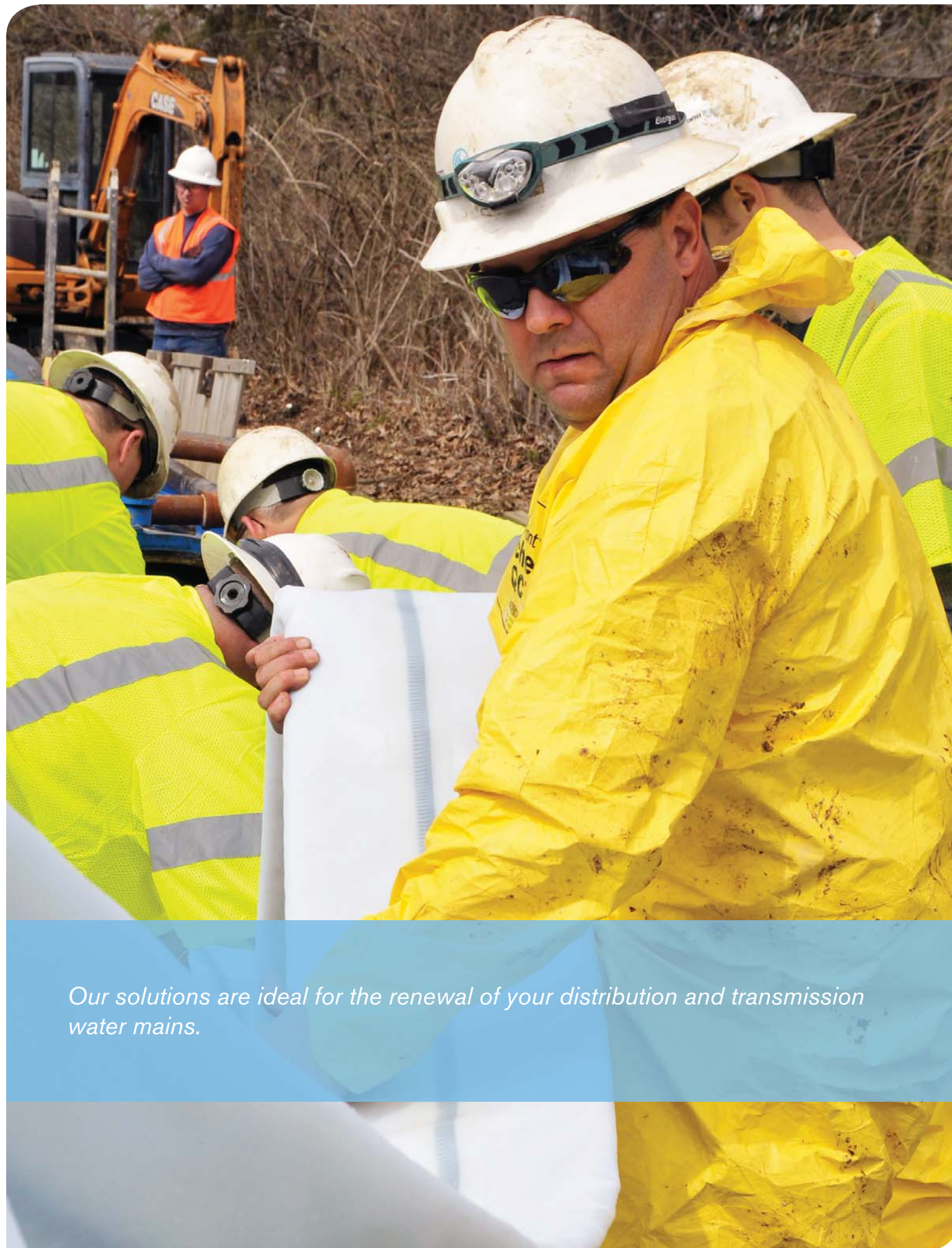
Since 1971, the Insituform® cured-in-place pipe (CIPP) process has been used to rehabilitate aging sewer pipelines. Insituform® CIPP remains our company's flagship product — and one of the world's most widely used trenchless rehabilitation solutions for gravity pipes, force mains, sanitary and storm water systems.

Our expanded capabilities enable us to protect a wide variety of structures from corrosion, restore structural integrity, reduce infiltration, eliminate leaking joints and increase pipeline flow capacity. They also help us serve communities undertaking large-scale construction programs that require multiple solutions and project management services. Ultimately, they allow us to protect the environment and increase the life expectancy of our world's underground infrastructure.

Our ISO:9000 manufacturing capabilities enable us to design CIPP tubes that meet each project's specifications — and to track each product from start to finish. Our regional distribution system helps keep transportation costs to a minimum.

Once at the jobsite, our versatile crews have the training, experience and technologies to safely install each solution, with less disruption and at a lower cost than other sewer repair methods.

*United States Environmental Protection Agency



Our solutions are ideal for the renewal of your distribution and transmission water mains.

Water

We are renewing drinking water distribution and transmission mains.

In many parts of the world, up to 60 percent of all drinking water leaks from pipes before it reaches a single home. In the United States, it's as high as 30 percent, with an estimated cost of approximately \$2.6 billion in lost revenue.* Problems like leaky joints, rust, corrosion and water main breaks all contribute to the problem, disrupting lives and livelihoods in the process.

The challenge communities now face is to repair and rehabilitate these aging drinking water pipelines without disrupting or damaging nearby utilities or other underground infrastructure systems.

[We offer a variety of solutions for renewing aging water distribution and transmission mains.](#) In addition to our pipeline rehabilitation products, we also offer products and services designed to protect water tanks and other structures from corrosion.

Our water solutions improve flow capacity and water quality, prevent water loss and restore structural integrity. In addition, they have the ability to go where some "dig and replace" methods can't. In fact, we have renewed pressure pipelines beneath interstates, bridges, busy roadways, airports and military installations without disrupting traffic.

Our water solutions are also quick to install and environmentally friendly. Manufactured under a quality management system with ISO:9000 standards, our products are certified to NSF/ANSI Standard 61.

We support every project from start to finish, ensuring single-source accountability.

*U.S. Geological Survey



Energy & Mining

We protect and extend the lifecycle of pipelines and other structures.

Pipelines are a critical link to the transportation of valuable materials for our industrialized world. Energy and mining pipelines, above and below ground storage tanks, refineries and mining operations must be protected. Corrosive and abrasive materials can quickly wreak havoc on the integrity of these pipelines and structures, leading to leaks, failures, environmental damage and lost production.



Insituform's comprehensive services for these valuable pipelines span their entire life cycle and include:

- Identifying and engineering corrosion solutions
- Applying coatings, liners and cathodic protection systems
- Rehabilitating pipelines to extend their useful life
- Managing capabilities for pipeline integrity
- Fabricating structures

Regulatory requirements often demand that energy and mining pipelines be coated and cathodically protected. Our services and products range from industry standard FBE coatings to complex deepwater insulations, SCR welding capabilities, quad joint fabrication and everything in between.

With installations on six continents, our services truly do span the globe. Closer to home, we operate a premier coating, insulation and prefabrication facility on the Gulf Coast with deepwater access. This 200-acre facility in Louisiana has

capabilities for barge, rail and truck loading and unloading, along with all the facilities necessary to complement onshore, offshore and challenging deepwater projects.

As experts in pipeline transportation and handling, we can save you time and money on supply chain logistics. Our contracts and advantageous terms with carriers help ensure the timely and economic delivery of your products where and when you need them.

Whether we are providing high-density polyethylene lining systems for internal pipe protection or providing long-term monitoring, cathodic protection and maintenance of a piping system, our goal is always the same: to protect your resources and the integrity of your infrastructure, while protecting public safety and the environment.

Our goal is to protect your resources and the integrity of your pipeline infrastructure.



Insituform[®]
Global Pipeline Protection[®]

Insituform Technologies, Inc.

17988 Edison Avenue
St. Louis, MO 63005

www.insituform.com

800-234-2992

© 2011 Insituform Technologies, Inc.

Insituform[®], the Insituform[®] logo, Global Pipeline Protection[®], iPlus[®], Infusion[®], InsituMain[®], InsituGuard[®], Thermopipe[®], iTAP[®], Safetyliner[®], Infusion[®] and Tite Liner[®], Bayou[®], the Bayou[®] logo, Corpro[®], the Corpro[®] logo, United Pipeline Systems[®] and the United Pipeline Systems[®] logo are the registered and unregistered trademarks of Insituform Technologies, Inc. and/or its affiliates.

AB1380 05/11